

"SELF TAUGHT" - TEST 1

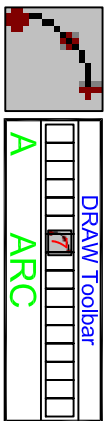
In this 5 minute test you are going to see how much you can accomplish by teaching yourself to complete the task with no instructor directions, simulating what happens in the work place for most AutoCAD users.

Too many AutoCAD users are self-taught. We will tell you when to start and stop, allowing 5 minutes to complete the task.

We will provide a free **EKHO Memory Strip** to everyone who completes the task correctly in the allotted time.

You may help each other as much as you wish.

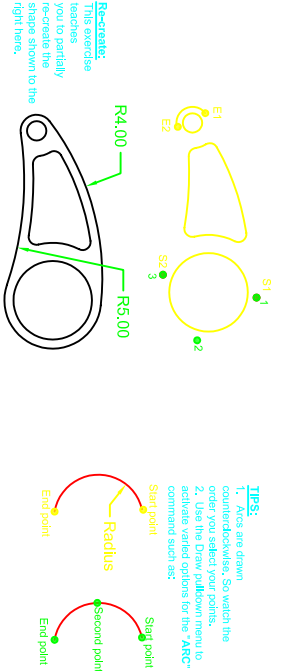
Type in the "VIEW" command to "Set Current" a view called "ARC_EXERCISE".



1. DRAW a three point "ARC" sequentially through the 3 points labelled 1,2,3.

2. DRAW two "ARCS" with Start, End, Radius, using the 2 points.

- start pt. S1, end point E1, with a Radius of 4 units.
- start pt. S2, end point E2, with a Radius of 5 units.



"INSTRUCTOR TEACHES ONE" - TEST 2

In this 5 minute test you are going to see how much you can accomplish when the instructor teaches one person and that person teaches the next person, simulating what happens in the work place for many AutoCAD users.

Too many AutoCAD users are self-taught. We will tell you when to start and stop, allowing 5 minutes to complete the task.

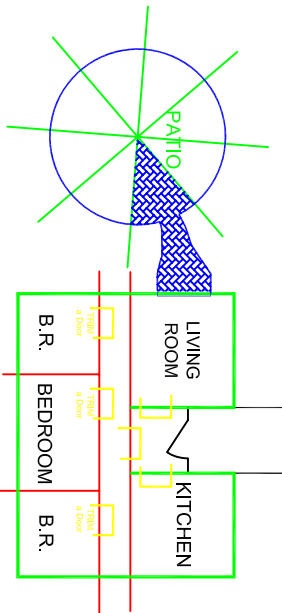
We will provide a free **EKHO Memory Strip** to everyone who completes the task correctly in the allotted time.

The designated "student teacher" may help everyone.

Type in the "VIEW" command to "Set Current" a view called "TRIM_EXERCISE".



1. "TRIM" all of the red walls protruding past the green outer walls (cutting edge).
2. TRIM the start segments of the red walls extending into the yellow scalloped lines.
3. TRIM the green radial lines outside of the patio's cutting edge blue circle.
4. Use Shift to toggle TRIM command to become an EXTEND command.



"INSTRUCTOR TEACHES ALL" - TEST 3

In this 5 minute test you are going to find out how much you can accomplish by watching the instructor show you how to complete the task, simulating what happens when you take a course taught professionally at The EKHO Institute.

Not enough AutoCAD users are taught professionally. We will tell you when to start and stop, allowing 5 minutes to complete the task.

We will provide a free **EKHO Memory Strip** to everyone who completes the task correctly in the allotted time.

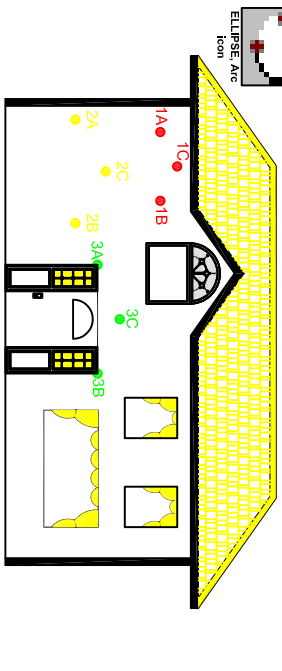
The instructor will help anyone who requests assistance.

Type in the "VIEW" command to "Set Current" a view called "ELLIPSE_EXERCISE".

TARGET AUDIENCE:
Potential new students for basic AutoCAD training.



1. Draw an "ELLIPSE" with axis endpoint at 1A and 2nd axis endpoint at 1B, height of 1C.
2. Draw an "ELLIPSE" with axis endpoint at 2A and 2nd axis endpoint at 2B, height at 2C.
3. Draw an "ELLIPSE" with width over the front entry doorway, (180 degree arc).
4. ERASE the numbered dots when finished.



OBJECTIVES:

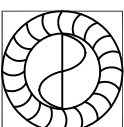
To compare the performance results of three common AutoCAD learning methods.

TEST 1 _____ (Number of successful completions)

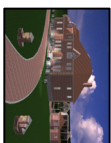
TEST 2 _____ (Number of successful completions)

TEST 3 _____ (Number of successful completions)

A fun demonstration to help illustrate the value of professional training compared to the much less successful method of self-teaching.



THE EKHO INSTITUTE
www.ekho.com



TRAINING BENEFITS DEMO

DWG TITLE		THE EKHO CHALLENGE	
CLIENT	THE EKHO INSTITUTE	REV.#	0
DWN BY	EKH	DATE:	2002/02/24
CHKD BY		REV. BY:	EKH
SCALE:	1:1 on Letter size	SHEET	OF 1
DESIGNED BY:	EKH	PROJECT:	EH020224
		DISK:	SERVER