

July 23/2004

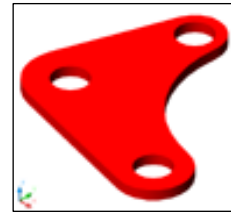
PDF copy in Q:\

THE EKHO INSTITUTE

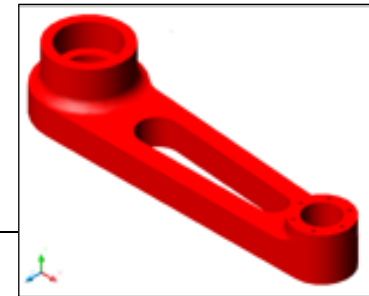
DELUXE 3D AUTOCAD TRAINING

LAB DAY ASSIGNMENTS / WORK*****

1. Create a folder in Q:\CLASS1167 with your name as the sub-folder name so you can access from any EKHO computer.1
2. Save all your new work and assignments to this folder for instructor access and your own from any EKHO computer.
3. [Print out your assignments each day and hand in to your instructor's desk for marking.**](#)
4. Run the batch file **NTCLASS 1167** each morning for the latest exercises that may have changed or been added.
5. Personal design / drafting projects are encouraged as one of the best learning tools!! Start simple though, not too difficult.
6. Students should help each other out **occasionally** to truly reinforce your learning experience!!
7. **Lab days are without an instructor.** Lab time **tutoring available for \$125 per hour** if requested and paid with cash or cheque.
8. Lab assistance will be free when the instructor passes by to check on the student's work and has time to assist/teach.
9. Log yourself into the sign-in sheet each day. Please let us know if you are going to miss a Lab day.
10. Ten (10) days (75 hrs.) of Lab time are included in the Deluxe AutoCAD package price. Extra or missed days available free at EKHO discretion and availability.



[CORNER_LINK.DWG*](#)



[STOP_LINK.DWG*](#)

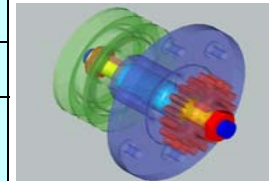
DATES	TIMES	TOPICS	REVIEW	PREVIEW	ASSIGNMENT(S)***** (3)	OPTIONAL WORK
Aug. 5	LAB DAY 1	2D Work	BASICS17.DWG	SELECT17.DWG	CORNER_LINK.DWG*	Work on personal project(s) (5)
Aug. 6	8:30AM - 4:00PM	"	LAYER17B.DWG	EDIT17.DWG	STAR_EXERCISE.DWG*	Study for 2-4 hours from Exam Practise Manual**
	or ⁴	"	OSNAP17A.DWG	BLOCKS17.DWG	OSNAP17B.DWG*	Select drawings from AutoCAD Exercise book
	12:45 to 4:30PM	"	OSNAP17B.DWG*		QUIZ-112.DWG	Select exercises from the Level 1 manual.
	x 2 afternoons.	"	INQUIRY17.DWG	AutoCAD Quiz	PICNIC TABLE (do not hand in)	Draw from your own drafting / design manuals
		"	DRAW17A.DWG		QUIZ-212.DWG	QUIZ-412.DWG
Aug. 9	LAB DAY 2	"	DRAW17A.DWG	SELECT17.DWG	PLATE_2002.DWG*	Study for 2-4 hours from Exam Practise Manual***
Aug. 10	8:30AM - 4:00PM	"		EDIT17.DWG	PLATE2_2002.DWG*	Work on personal project(s) (5)
		"		BLOCKS17.DWG	QUIZ-312.DWG	QUIZ-512.DWG
Aug. 11	LAB DAY 3	"	DRAW17A.DWG	SELECT17.DWG	BYPASS_PLATE.DWG*	Study for 2-4 hours from Exam Practise Manual***
Aug. 12	8:30AM - 4:00PM	"		EDIT17.DWG	BEARING_BLOCK.DWG*	Work on personal project(s) (5)
		"		BLOCKS17.DWG	CARD TABLE (do not hand in)	Work on Classroom blocks for Classroom17
Aug. 13	LAB DAY 4	"	SELECT17.DWG	BLOCKS17.DWG	SAW_BLADE.DWG*	Study for 2-4 hours from Exam Practise Manual***
Aug. 16	8:30AM - 4:00PM	"	DIMS2-17.DWG		LEAF_SPRING.DWG*	Design an entry door like ARCHITECTURAL_DOOR
		"	EDIT17.DWG	GRIPS17.DWG	PLOT_PLAN.DWG*	Work on Classroom blocks for Classroom17
Aug. 17	LAB DAY 5	"	DIMS17.DWG		PLATE3_2002.DWG	Study for 2-4 hours from Exam Practise Manual***
Aug. 18	8:30AM - 4:00PM	"	GRIPS17.DWG	CLASSROOM2_LAYOUT	STOP_LINK.DWG*	Work on personal project(s) (5)
		"	CLASSROOM17.DWG		TEST - 2 HRS. - to be marked	Work on CLASSROOM17.DWG
Aug. 19	LAB DAY 6	LAYOUTS	LAYOUTS17.DWG	SHAFT_MOUNT.DWG	CONVERT_CARD_TABLE_TO_3D²	Study for 2-4 hours from Exam Practise Manual***
Aug. 20	8:30AM - 4:00PM	"	STUDENT_PHOTOS	PRINT17.DWG	CONVERT_PICNIC_TABLE_TO_3D²	Design an entry door like ARCHITECTURAL_DOOR
Aug. 23	LAB DAY 7	3D Work	3D_SURFACES-17.DWG	3D-VIEWS17.DWG	PLATE2_2002.DWG* 3D Version	Study for 2-4 hours from Exam Practise Manual***
Aug. 24	8:30AM - 4:00PM	"	3D-VIEWS17.DWG		BYPASS_PLATE.DWG* - 3D Version	Work on personal project(s) (5)
Aug. 25	LAB DAY 8	"	3D_SOLIDS-17.DWG		STOP_LINK.DWG* - 3D Version	Study for 2-4 hours from Exam Practise Manual***
Aug. 26	8:30AM - 4:00PM	"	SHED_17.DWG		CORNER_LINK.DWG* 3D Version	Work on personal project(s) (5)
Aug. 27	LAB DAY 9	"		GEAR_ASSEMBLY	BEARING_BLOCK.DWG* - 3D Version	Study for 2-4 hours from Exam Practise Manual***
Aug. 30	8:30AM - 4:00PM	"		SWISS_ARMY_KNIFE	PLATE_2002.DWG* 3D Version	Work on personal project(s) (5)
Aug. 31	LAB DAY 10	"		CHIPPENDALE.DWG	PLATE3_2002.DWG - 3D Version	Study for 2-4 hours from Exam Practise Manual***
Sept. 1	8:30AM - 4:00PM	"	GEAR_ASSEMBLY	GEAR_ASSEMBLY	3D Project Rendered, Plotted.³	Work on personal project(s) (5)



[PICNIC TABLE](#)



[CARD TABLE](#)



[GEAR_ASSEMBLY](#)



* Bonus exercises (Assignments) found in C:\R17\CLASS1167\BONUS_EXERCISES folder.

** Please put a title block with your name and date on all assignments handed in to the instructor's desk. Use EKHOBLOK in Q:\

*** For students who have purchased the Exam Practise book and plan to write the formal AutoCAD 2000 Certification exam.

**** Hand in the assignments on due date only.

***** For students enrolled in 22 day Deluxe AutoCAD program only.

1. Sample Folder name to store your exercise drawings ; Q:\CLASS1167\ELTON

2. Open your 2D drawing saved on Lab day 1 and use the "EXTRUDE" command and "ALIGN" command to convert to a 3D model.

3. [We prefer that you create your own 3D project, but if you don't have one we have 2 classics: GEAR ASSEMBLY and a GAZEBO](#)