



2 Gb USB  
Flash Drive

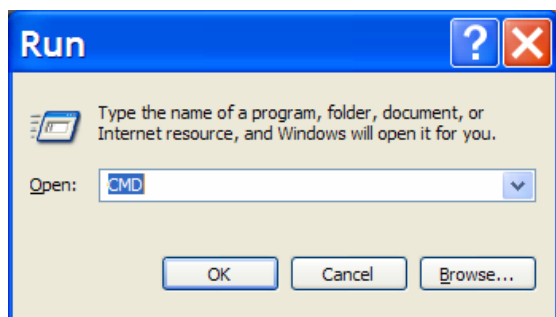
## **XCOPY Backups**

By Elton Keith Hammond ©  
Nov. 5/2003

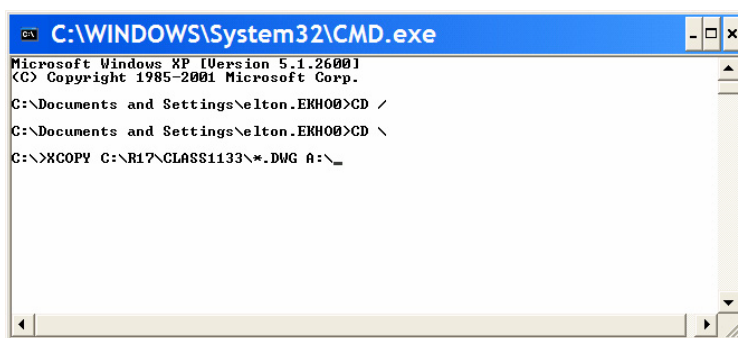


Maxtor 250 Gb  
Firewire Hard Drive

The very simple and powerful **XCOPY** command has it's roots back in the days of DOS, but can still be used by manually typing it in at a CMD.exe prompt or by placing it in a batch file (BACKUP.BAT) which is simply a special text file with an extension of .BAT. **I use it every day to back up my computer hard drives automatically to an external Firewire Hard drive and USB Flash Drives.** XCOPY has been enhanced with recent releases of Windows! This has been a very reliable backup method for several years at EKHO now.



Start the DOS window up from the Windows "START" button, RUN and type in CMD.



The CMD.exe window is known also as a DOS box, Command prompt or DOS window to allow you to run traditional DOS commands, programs and batch files.

### **XCOPY SOURCE DESTINATION SWITCHES**

**XCOPY C:\ACAD\PROJECT\_A\\*.DWG A:\ACAD\PROJECT\_A /Y/D**

**/Y** this switch will answer Y(es) to Yes/No/All prompts automatically.

**/D** this Date switch will only copy files that are newer than ones on the destination.

### **Examples:**

To copy ALL files and sub-folders (/S) on C: drive to E: drive.

**XCOPY C:\\*.\* E:\ /D/S/H/V/C/F/K/Y**



1 Gb Compact  
Flash Card

To get help with all the /switches; go to the DOS prompt (CMD.exe window) and type in the following:

XCOPY /?

To copy **ALL** AutoCAD drawings (\*.dwg) in the PROJECT\_X directory on C: drive to A: floppy drive.

**XCOPY C:\PROJECT\_X\\*.DWG A:\PROJECT\_X /D/Y/C/V**

**/SWITCHES USED AS FOLLOWS:**

/D - copies files over top of old ones if newer date found on source (This is a **VERY** important switch on large hard drives to eliminate hours of wasted time copying files already backed up)  
/S - COPIES DIRECTORIES AND SUB-DIRECTORIES EXCEPT EMPTY ONES  
/E - COPIES EMPTY DIRECTORIES  
/V - COPIES VERIFIES EACH NEW FILE  
/C - COPIES EVEN IF ERRORS OCCUR  
/F - COPIES DISPLAYS SOURCE AND DESINATION FILES WHILE COPYING  
/H - COPIES HIDDEN AND SYSTEM FILES  
/K - COPIES ATTRIBUTES  
/Y - STOP PROMPTING FOR PERMISSION TO OVERWRITE  
/EXCLUDE:FIREWIRE\_EXCLUDE.TXT - STOPS COPYING OF .BAK,.BK1,.TMP FILES listed in the exclusion file. No wildcards allowed in the exclusion file.

EXAMPLE OF THE /EXCLUDE simple text file contents that eliminates the copying of .BAK and other undesirable files to your backup device such as a Firewire Drive. One file extension per line.

.bak  
.tmp  
.bk1  
.bk2  
.bk3  
.ac\$\br/>.SYS  
.mp3

**Current Backup Devices** that can be used with this XCOPY Batch file:

- [Hitachi Microdrive](#) type II compact flash drive up to 4 Gb now.
- [Toshiba 1.8" drives](#) up to 40 Gb.
- [Notebook 2.5" drives by](#) Toshiba and Hitachi up to 80 Gb.
- [Compact Flash Cards](#) in capacities up to 6 Gb.
- [USB Flash Drives](#) up to 2 Gb.
- [Firewire / USB Hard Drives](#) up to 500 Gb
- [Iomega Zip drives](#) up to 750 Mb capacities.
- [Internal hard drives](#) up to 300 Gb.

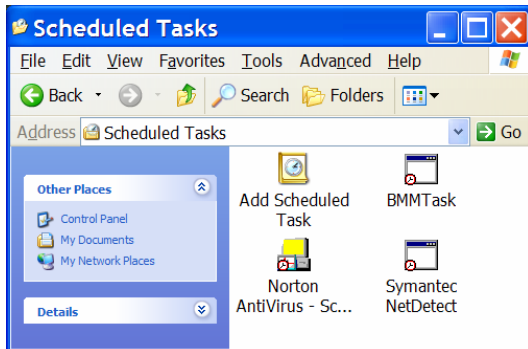


## RELIABLE AUTOMATIC SCHEDULED BACKUPS

When you write up your **XCOPY** backup command instructions in a batch file with Windows Notepad, (Call it BACKUP.BAT) and store it in a folder like C:\UTIL it can then be easily scheduled to run automatically every day, week, month, etc. with the Windows 2000 or Windows XP Scheduler found in the **Control Panel** folder. You can also create a shortcut on your desktop to run the batch file manually at your discretion.



BACKUP\_TO\_2GB\_FLASH\_DRIVE.BAT.Ink



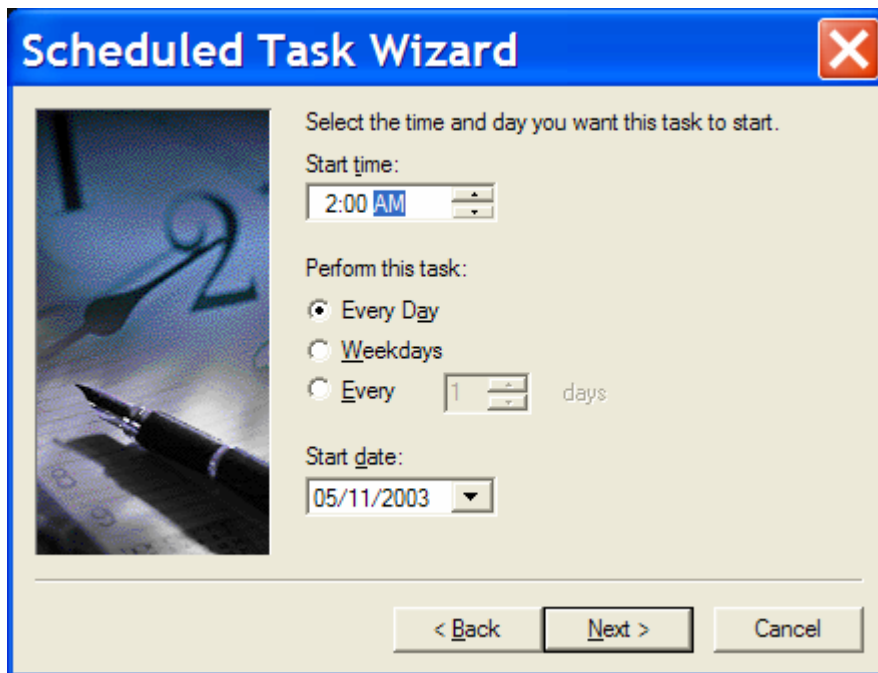
Choose "Add Scheduled Task" to set up your backup batch file to run automatically.



Use the Browse button to find your BACKUP.BAT batch file.



Choose how often you want to backup your files with BACKUP.BAT.



**Choose a suitable time of the day for the backup. Make sure the computer will be on at that time.**



**Don't forget to enter your user password or the scheduled task will not run! Verify the next day that it did back up your important files to your external drive.**

## EXAMPLE OF AN ACTUAL EKHO BATCH FILE

The following example batch file created with Windows Notepad, is used to manually transfer files to my IBM Thinkpad A31P notebook computer's 60 Gb. hard drive so I can take most of my files with me from my server when I leave the office.

```
@ECHO OFF
REM   EKH   June 25,2003 (A31P Received on Tuesday May 28/2002)
REM   Must be run only on the Thinkpad A31P due to E: drive, NOT UNC naming any more.
REM   Fails with the UNC designation \\THINKPADA31P\IBM_60GB vs. E: drive designation.
@echo Watch out when the 1 Gb Microdrive is removed, or the DVD Player is removed. May change the drive
letters.
@pause
REM   Modified when installed in THINKPAD A31P.
REM   This job is run manually by ELTON HAMMOND.
REM   Backup data on EKHONT4 server to IBM THINKPAD A31P.
REM   Backup_ekhont4data_a31p.bat in c:\utils
REM   Batch file to copy all files from the data folder on D: drive on EKHONT4 to IBM second 60 Gb. In
REM   THINKPAD A31P.
XCOPY \\EKHONT4\DDRIVE\DATA\*.* E:\EKHONT4\DDRIVE\DATA\
/D/S/E/V/C/F/H/K/Y/EXCLUDE: \\EKHONT4\CDRIVE\UTIL\FIREWIRE_EXCLUDE.TXT
REM FROM THE APPS\DRIVERS FOLDER ON D: DRIVE ON EKHONT4 TO ibm 60gb
XCOPY \\EKHONT4\DDRIVE\APPS\DRIVERS\*.* E:\EKHONT4\DDRIVE\APPS\DRIVERS\
/D/S/E/V/C/F/H/K/Y/EXCLUDE: \\EKHONT4\CDRIVE\UTIL\FIREWIRE_EXCLUDE.TXT
rem Copies all the photos from EKHONT4 to IBM 60GB
XCOPY \\EKHONT4\DDRIVE\EKHO-NT-1\JAZ\PHOTOS\*.* E:\EKHONT4\DDRIVE\EKHO-NT-1\JAZ\PHOTOS\
/D/S/E/V/C/F/H/K/Y/EXCLUDE: \\EKHONT4\CDRIVE\UTIL\FIREWIRE_EXCLUDE.TXT
REM
REM /SWITCHES USED AS FOLLOWS:
REM /D - COPIES FILES OVER TOP OF OLD ONES IF NEWER DATE FOUND ON SOURCE
REM /S - COPIES DIRECTORIES AND SUB-DIRECTORIES EXCEPT EMPTY ONES
REM /E - COPIES EMPTY DIRECTORIES
REM /V - COPIES VERIFIES EACH NEW FILE
REM /C - COPIES EVEN IF ERRORS OCCUR
REM /F - COPIES DISPLAYS SOURCE AND DESINATION FILES WHILE COPYING
REM /H - COPIES HIDDEN AND SYSTEM FILES
REM /K - COPIES ATTRIBUTES
REM /Y - STOP PROMPTING FOR PERMISSION TO OVERWRITE
REM /EXCLUDE:FIREWIRE_EXCLUDE.TXT - STOPS COPYING OF .BAK,.BK1,.TMP FILES listed in the
exclusion file. No wildcards allowed in the exclusion file.
```



**Learn about  
Mobile Workstation**

**THINKPAD T41P AND R50P NOTEBOOKS —**  
POWER-CERTIFIED FOR GRAPHICS-INTENSIVE  
APPLICATIONS IN A MOBILE WORKSTATION

ThinkPad T41p and R50p models shown

**Workstation class IBM A31P notebook computer has room for up to 3 x [80 Gb 2.5" drives](#) + 2 x [40Gb 1.8" drives](#) internally! (320 Gb total) Enough room to back up an entire server.**